

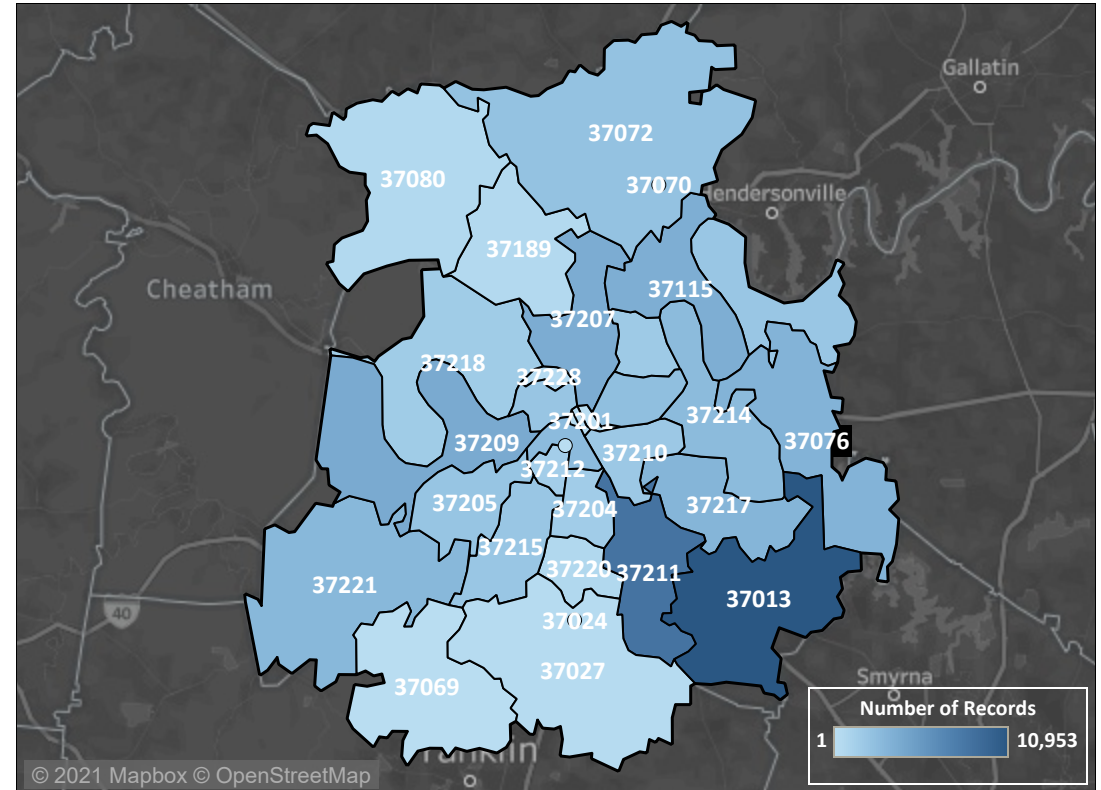
NASHVILLE

TOTAL CASES	77,795 (+ 394 since 1/12)
CONFIRMED CASES	74,204
PROBABLE CASES	3,591
TOTAL ACTIVE	6,790
TOTAL INACTIVE/RECOVERED	70,481
TOTAL DEATHS	524
CONFIRMED DEATHS	494
PROBABLE DEATHS	30

Notes

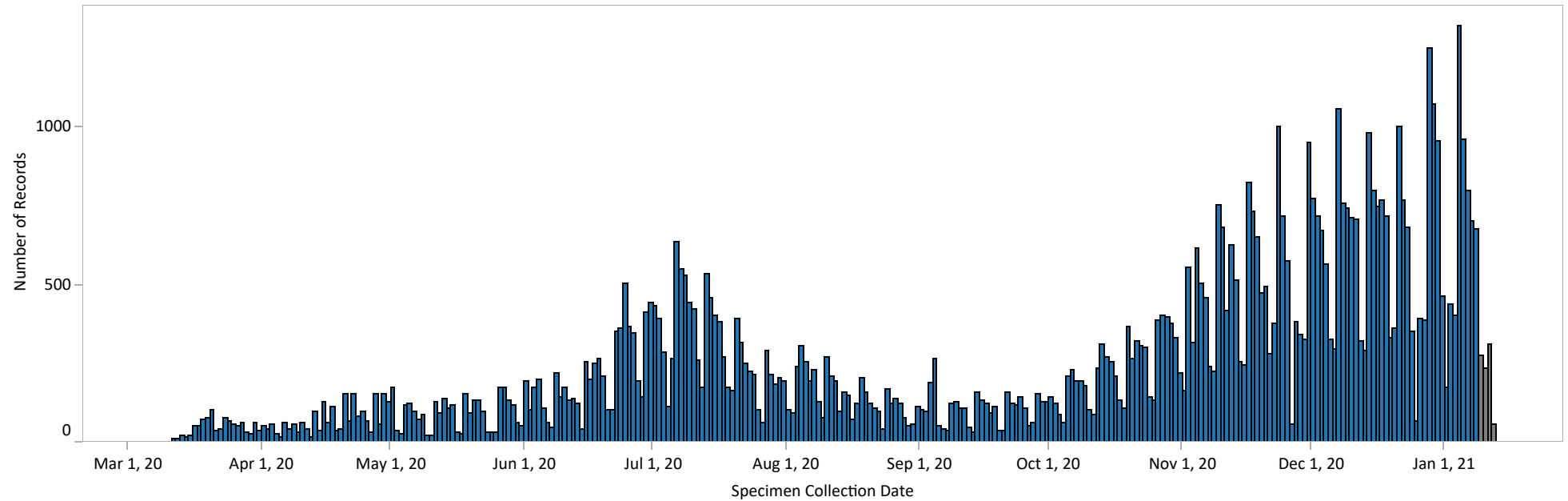
1. Cases added since the previous date represent tests collected during the previous several days.
2. Case count data changes rapidly as labs conduct tests and identify new cases. Labs assign those cases to a county or leave that information blank. Metro and regional health departments then determine the appropriate county of jurisdiction during their public health investigation.
3. All data are preliminary and are subject to change based on additional reporting.

Total COVID-19 Cases by ZIP Code



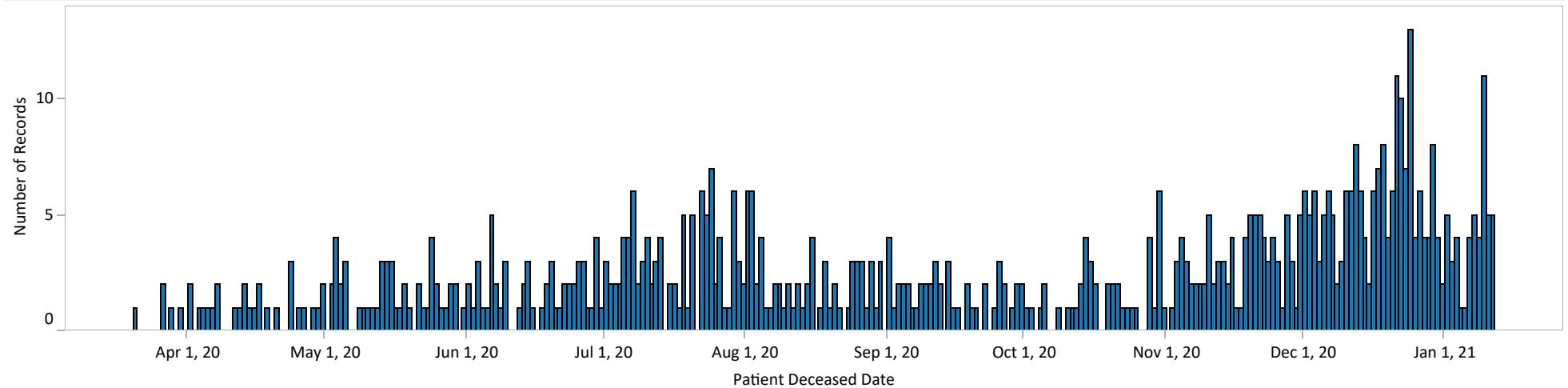
Epidemic Curve

Nashville - Epidemic Curve of COVID-19 Cases by Specimen Collection Date



Deaths

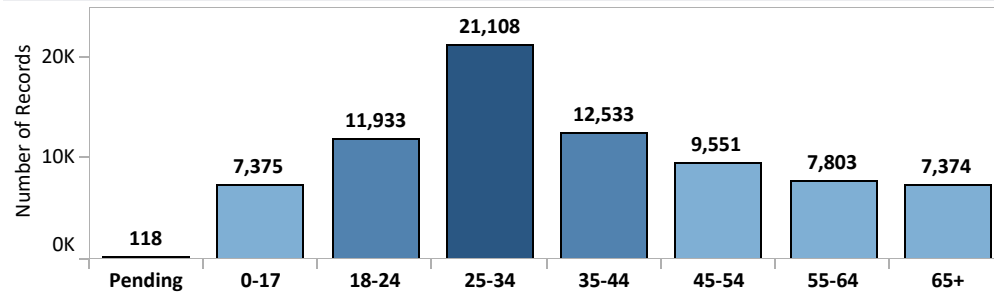
COVID Deaths by Date of Death



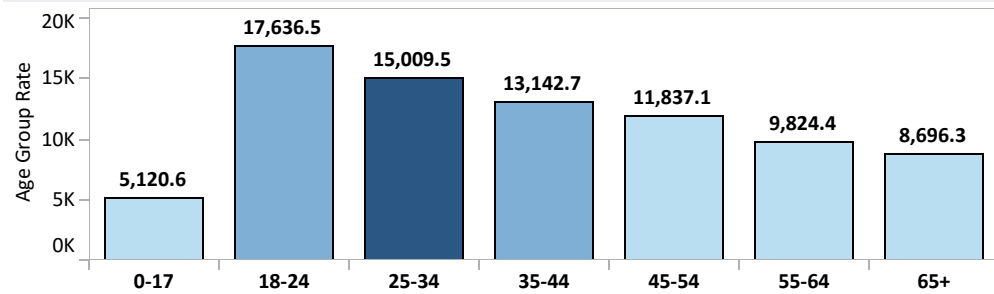
DEMOGRAPHICS

Age Range: 1 month - 107 years
 Average Age: 37.3 years
 Average Age - DECEMBER: 39.4 years

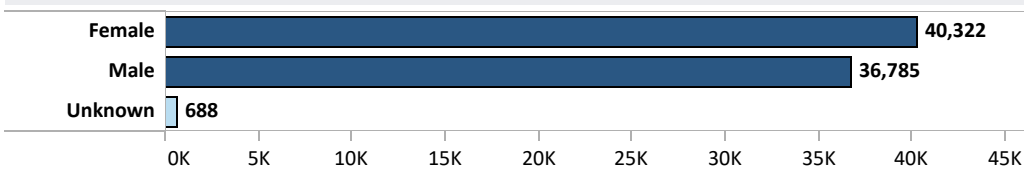
Age Group (years)



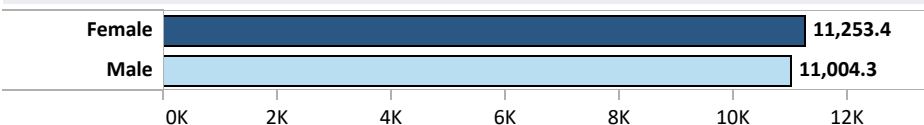
Incidence Rate by Age Group (per 100,000)



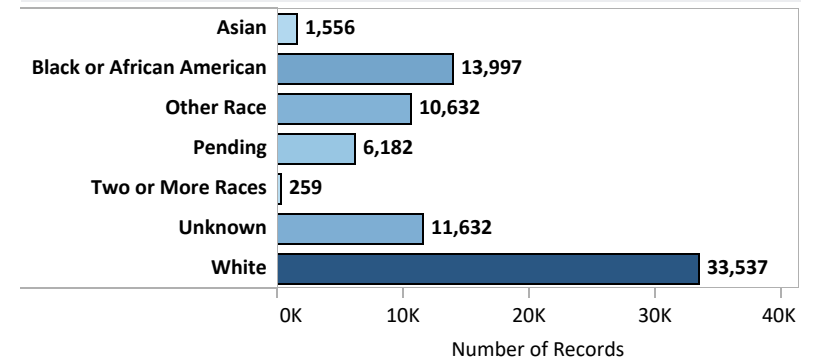
Sex



Incidence Rate by Sex (per 100,000)

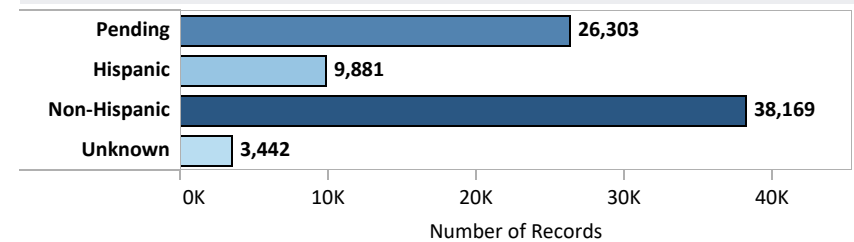


Race



Asian	2.0%
Black or African American	18.0%
Other Race	13.7%
Pending	7.9%
Two or More Races	0.3%
Unknown	15.0%
White	43.1%
Total	100.0%

Ethnicity

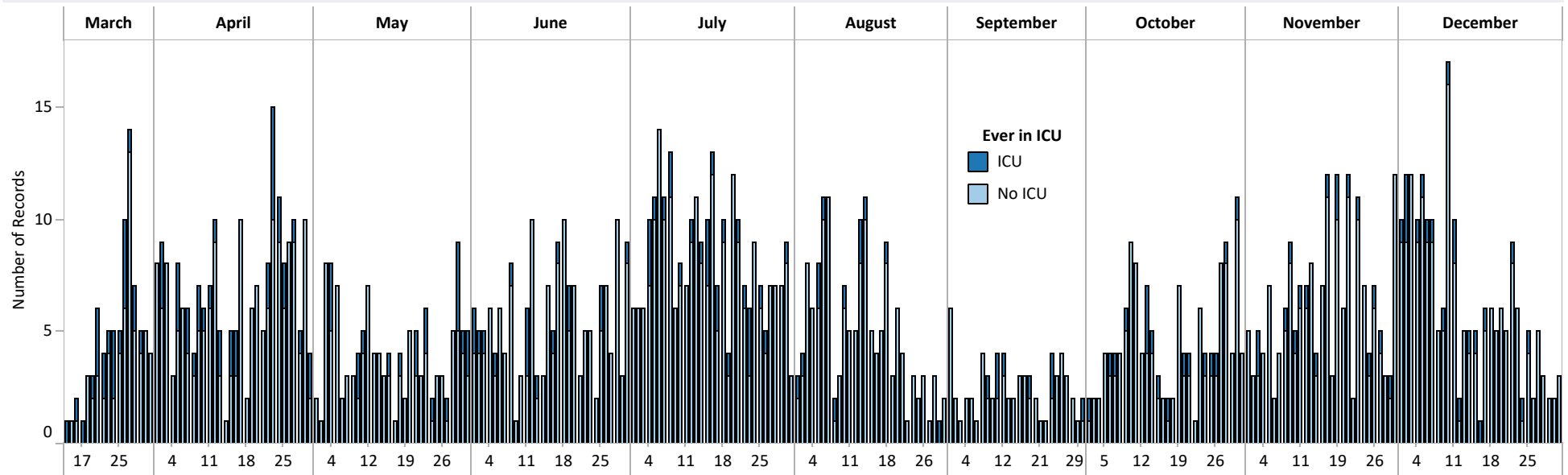


Pending	33.8%
Hispanic	12.7%
Non-Hispanic	49.1%
Unknown	4.4%
Total	100.0%

As of December 10, there were 5,975 cases that were lost to follow-up and no demographic data were able to be obtained.

HOSPITALIZATIONS

Total NDR Cases *EVER HOSPITALIZED* and *EVER in ICU* by Hospital Admission Date



Nashville Total NDR Cases *EVER HOSPITALIZED*

Saint Thomas Rutherford	3
TriStar Hendersonville	9
Nashville General	59
Saint Thomas West	73
TriStar Skyline	101
TriStar Centennial	134
VUMC	161
TriStar Summit	167
Saint Thomas Midtown	189
TriStar Southern Hills	198
Other	650
Total	1,744

Total NDR Cases *EVER IN ICU*

Age Group	Female	Male	Total
0-17		3	3
18-24	3	2	5
25-34	1	9	10
35-44	10	12	22
45-54	19	26	45
55-64	16	27	43
65+	37	40	77
Total	86	119	205

Duration of Hospitalization (days)

Avg. Hsptl Duration Days	8.2
Min. Hsptl Duration Days	0.0
Max. Hsptl Duration Days	151.0

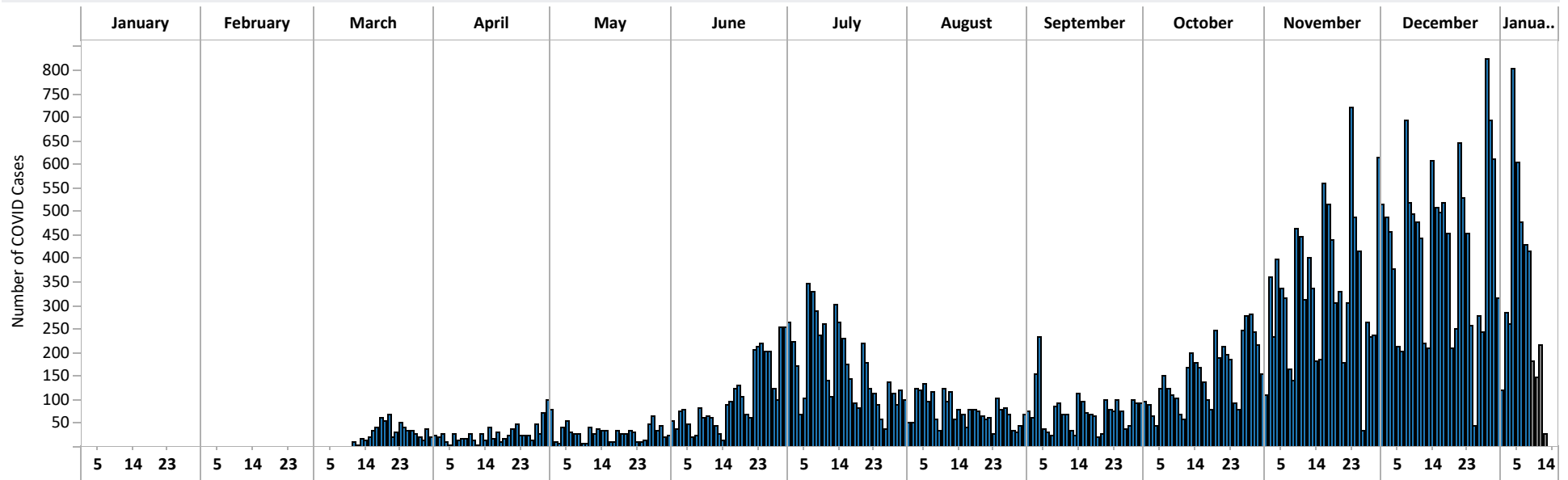
Total NDR Cases among Healthcare Workers Age Group and Sex

Age Group	Female	Male	Total
0-17	6	1	7
18-24	268	51	319
25-34	622	176	798
35-44	298	86	384
45-54	214	61	275
55-64	181	59	240
65+	52	25	77
Total	1,641	459	2,100

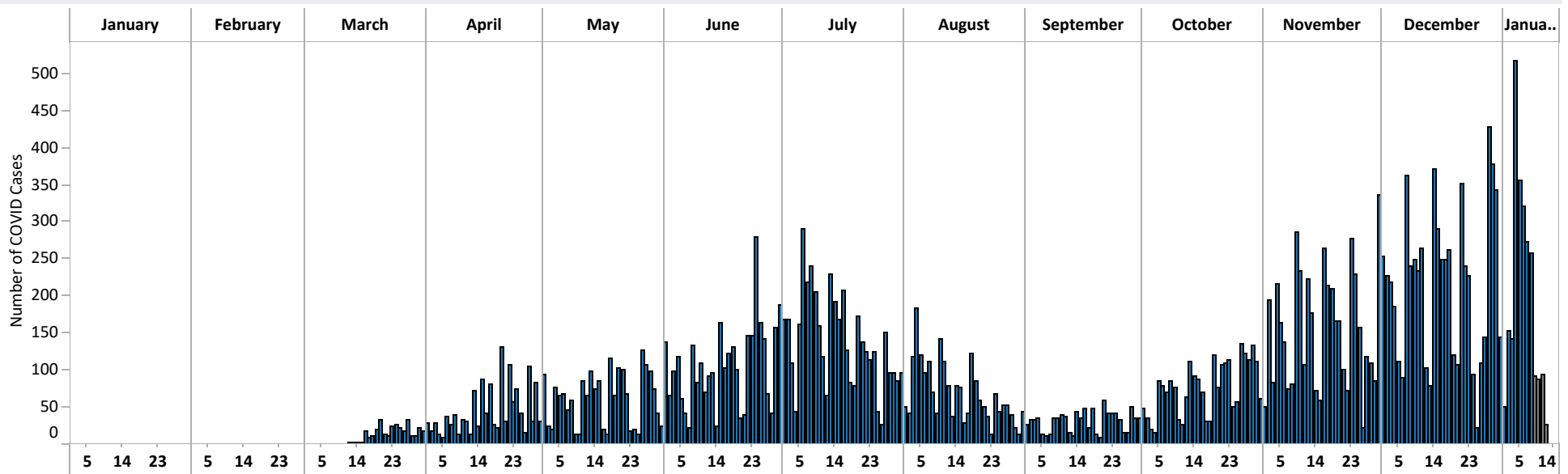
Note: Information about hospitalization status is collected at the time of diagnosis and therefore may be incomplete. Hospitalization numbers presented in this report indicate the number of patients that were ever hospitalized during their illness and does not indicate the number of patients currently hospitalized.

COVID-19 Update | January 13, 2021
Epidemiology and Surveillance Data

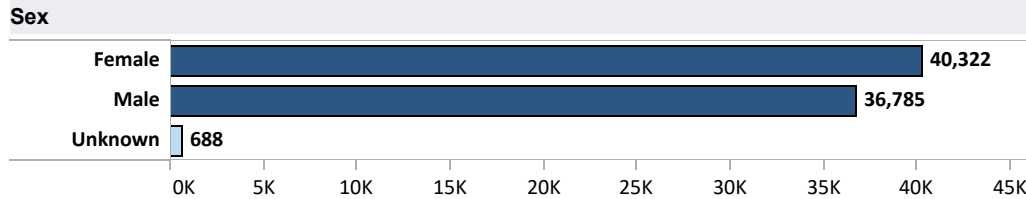
Epi Curve by Specimen Collection Date
All ZIP Codes except 37013, 37211, 37217, 37115, and 37207



Epi Curve by Specimen Collection Date
ZIP Codes 37013, 37211, 37217, 37115, and 37207



COVID-19 Update | January 13, 2021
Epidemiology and Surveillance Data



NASHVILLE

TOTAL CASES	77,795 (+ 394 since 1/12)
CONFIRMED CASES	74,204
PROBABLE CASES	3,591
TOTAL ACTIVE	6,790
TOTAL INACTIVE/RECOVERED	70,481
TOTAL DEATHS	524
CONFIRMED DEATHS	494
PROBABLE DEATHS	30

Age Range: 1 month - 107 years
Average Age: 37.3 years
Average Age - DECEMBER: 39.4 years

Age Group

Pending	118
0-10	3,597
11-20	7,766
21-30	22,021
31-40	15,222
41-50	10,368
51-60	8,638
61-70	5,635
71-80	2,802
81+	1,628
Total	77,795

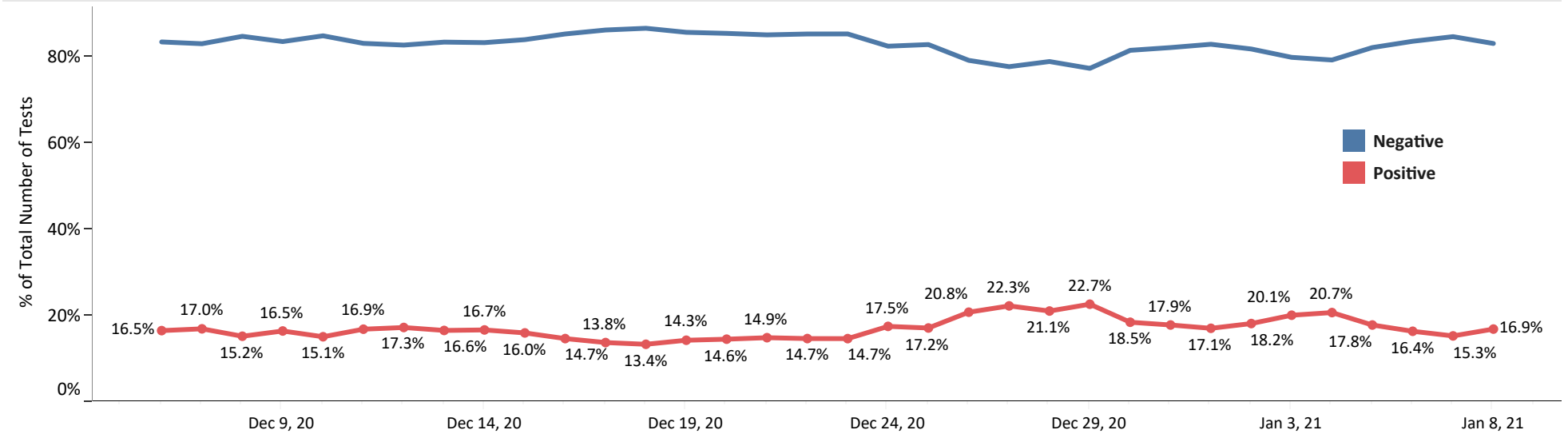
Time between Specimen Collection and Reporting into NBS by Lab

	December 6, 2020	December 13, 2020	December 20, 2020	December 27, 2020	January 3, 2021	Total
Aegis Labs	4.6	2.7	2.3	2.0	1.9	2.7
Diatherix	5.2	3.4	4.5	5.0	3.5	4.3
Genetic Assays	5.3	3.1	2.7	2.3	2.6	3.2
LabCorp	5.3	3.3	2.7	2.4	2.4	3.5
PathGroup	4.8	2.6	1.8	1.7	1.5	2.4
Quest Diagnostics	5.8	4.1	3.2	3.5	4.0	4.1
TDH SPHL	5.5	4.1	2.0	7.3	2.1	4.0
VUMC	4.8	2.6	2.1	1.7	1.9	2.4
Overall Average (days)	4.8	2.7	2.0	1.8	1.7	2.6

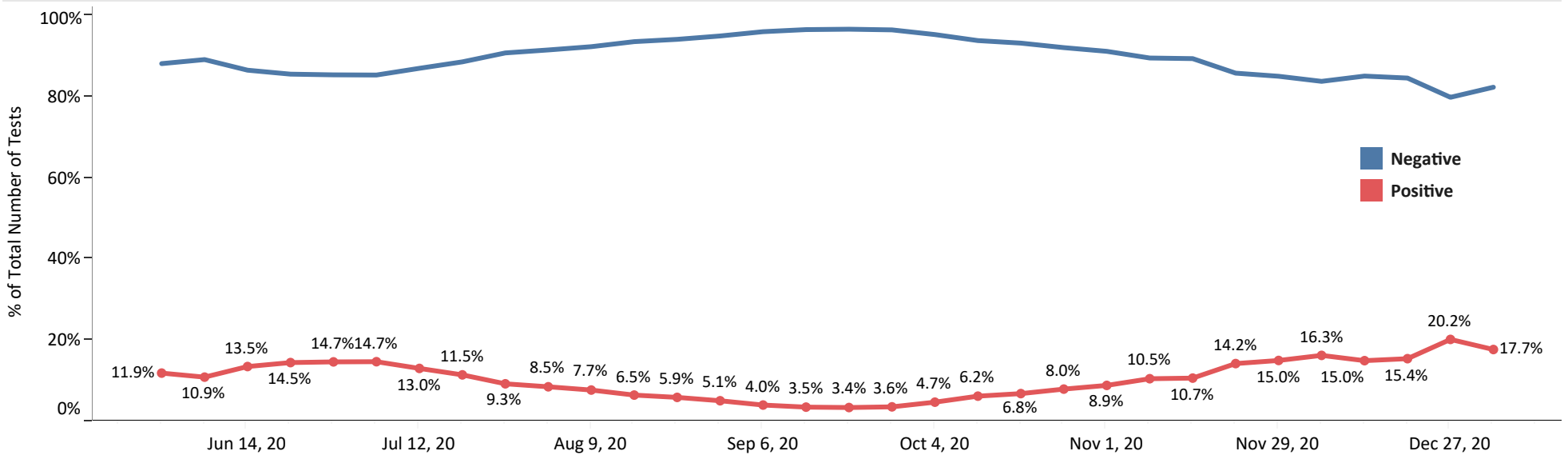
COVID-19 Update | January 13, 2021

Epidemiology and Surveillance Data

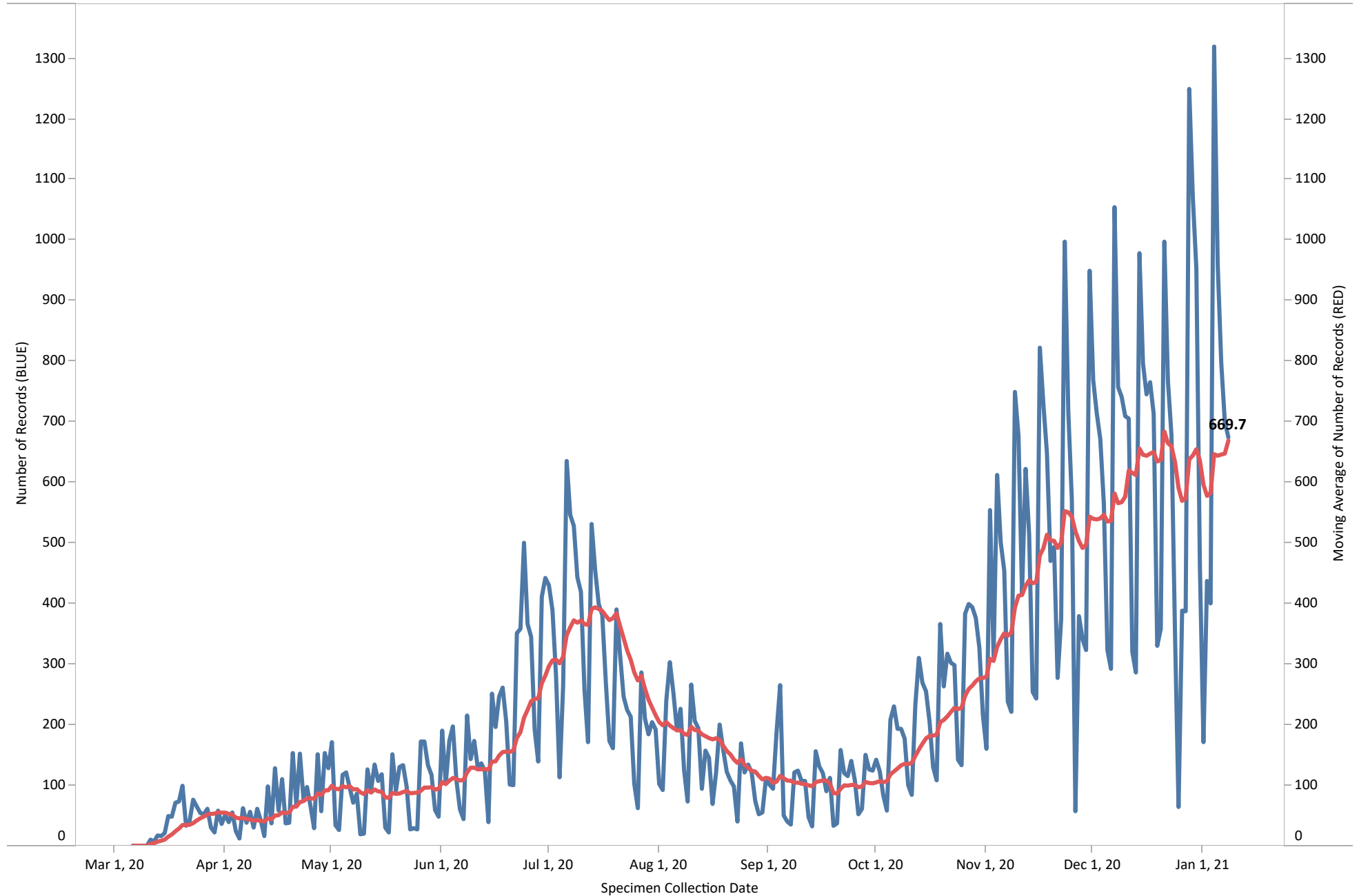
Nashville - Daily Attack Rate by Specimen Collection



Nashville - Weekly Attack Rate by Specimen Collection

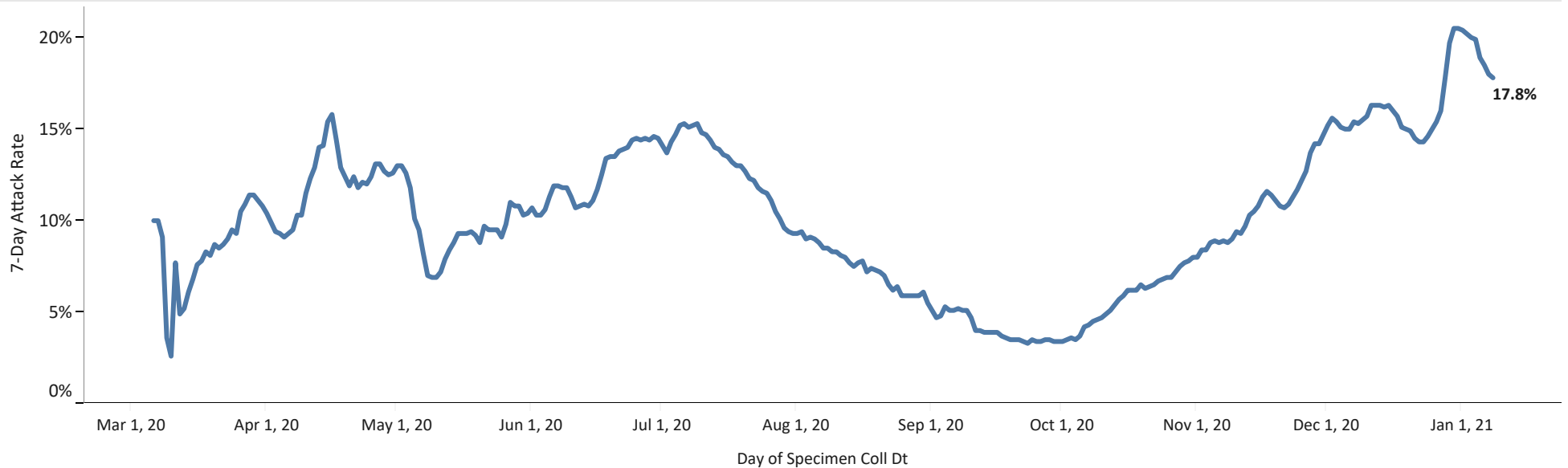


Number of New COVID-19 Cases with 14-Day Moving Average

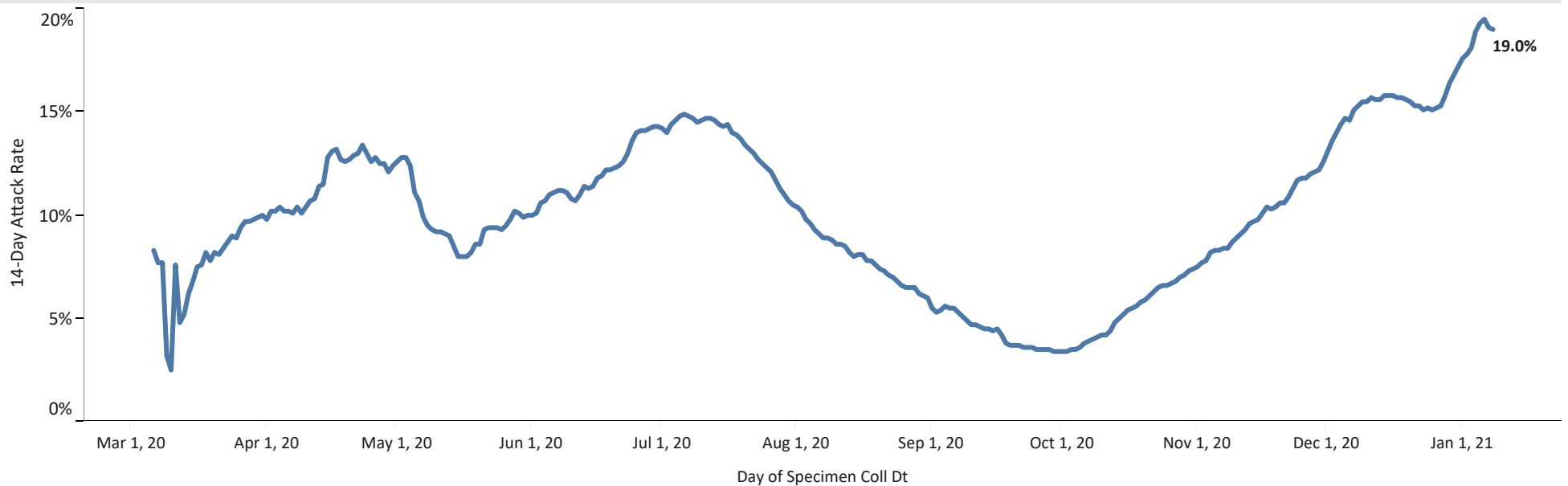


COVID-19 Update | January 13, 2021
Epidemiology and Surveillance Data

7-Day Percent Positive of COVID-19 Tests



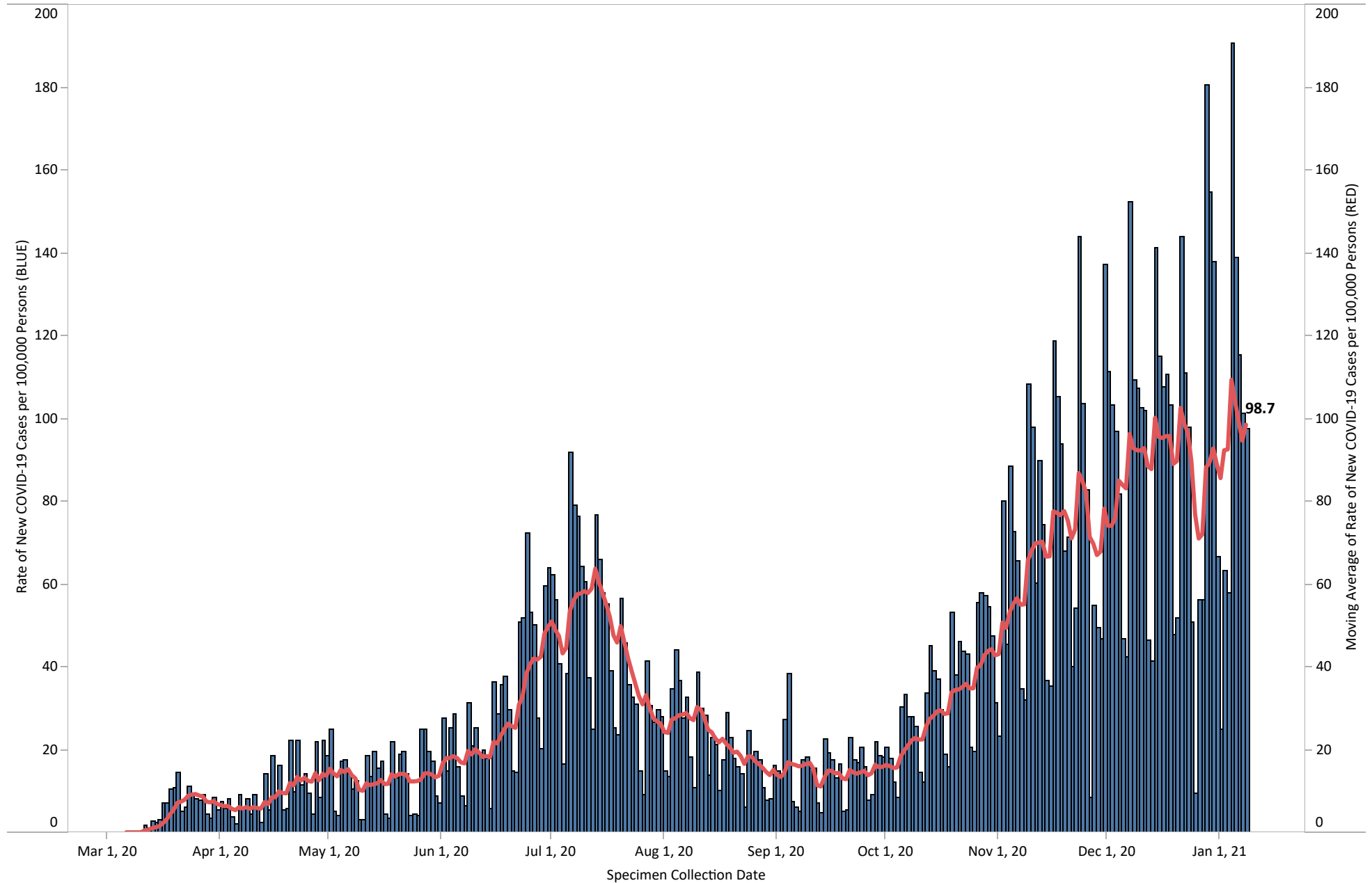
14-Day Percent Positive of COVID-19 Tests



Notes: Percent positive calculations are based on 7 and 14-day lookback periods.
Metro Public Health Department of Nashville/Davidson County | Public Health Emergency Preparedness (PHEP) Program

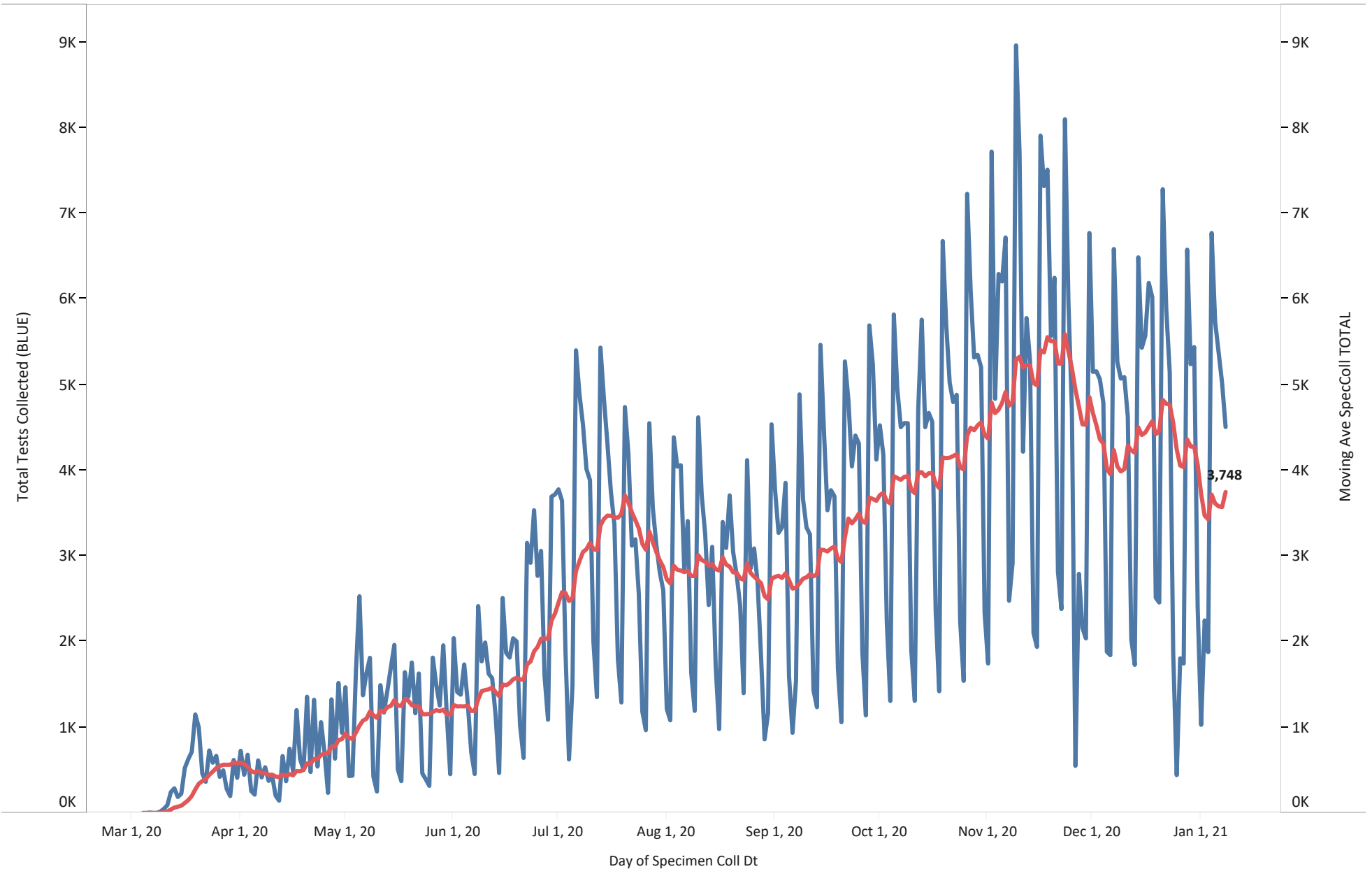
COVID-19 Update | January 13, 2021
Epidemiology and Surveillance Data

Rate of New COVID-19 Cases per 100,000 Persons
7-Day Moving Average



COVID-19 Update | January 13, 2021
Epidemiology and Surveillance Data

Total Tests by Test Date
March 1-January 8, 2020



Notes: Moving average is based on a 14-day lookback period.

Metro Public Health Department of Nashville/Davidson County | Public Health Emergency Preparedness (PHEP) Program